

Parkinson's Scientific Art!

Call out now open!

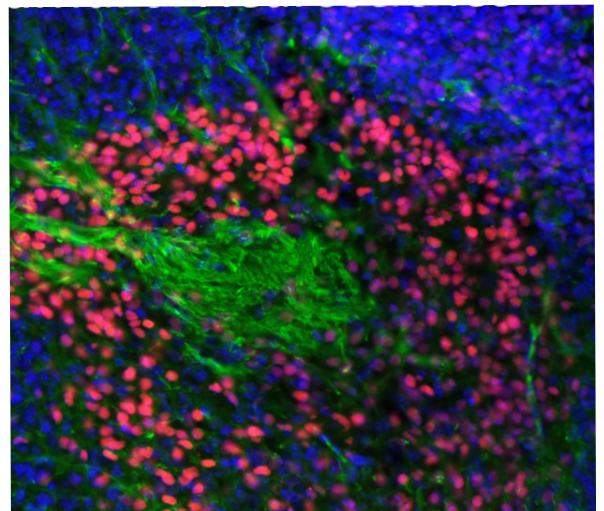
Parkinson's Art! will be an art exhibition showcasing scientific developments in Parkinson's research

Parkinson's Disease is a neurodegenerative disorder, with approximately 32 Australians being diagnosed daily. Organisers are looking for interested scientists and clinicians around the world who are currently working on Parkinson's research to contribute scientific images of their work.

Selected artworks will be exhibited in August 2017-August 2018 with the primary vision to increase awareness of Parkinson's Disease.

PROJECT VISION & VALUES

- *Raise awareness of Parkinson's Disease.
- *Celebrate the scientific developments in Parkinson's research
- *Provide a platform for artists and scientists to collaborate.
- *Encourage engagement between community, science and art.



Program

Call out closes: 30th June 2017.

Panel meets to select of work: 1st July 2017

Selected contributors will be requested to provide a brief caption describing image.

Preparation for exhibition and website development: 1st July 2017-10th August

Exhibition sites: Sydney Science week Exhibition: 12 August 2017- 20th August 2017



Please email images to asheeta.prasad@unsw.edu.au
Interested sponsors, scientists and volunteers please contact:
Dr Asheeta Prasad
asheeta.prasad@unsw.edu.au

parkinson's IN THIS TOGETHER
NSW

Parkinson's Scientific Art!

Information for contributors

Contributor name:

Lab:

Institution:

email contact:

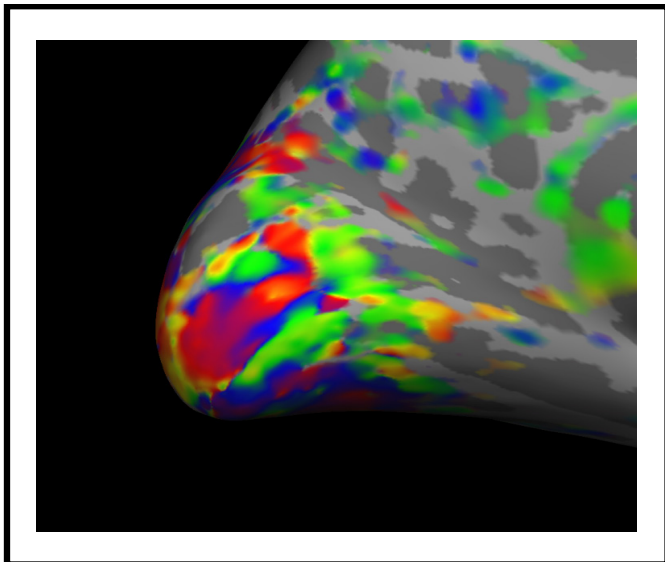
phone contact:

Methodology used: ie. microscopy, EEG recording, human imaging, Magnetic Resonance Imaging (MRI) golgi staining, Positron Emission Tomography (PET), computed tomography (CT), rodent models, *in vivo*, *in vitro* applications

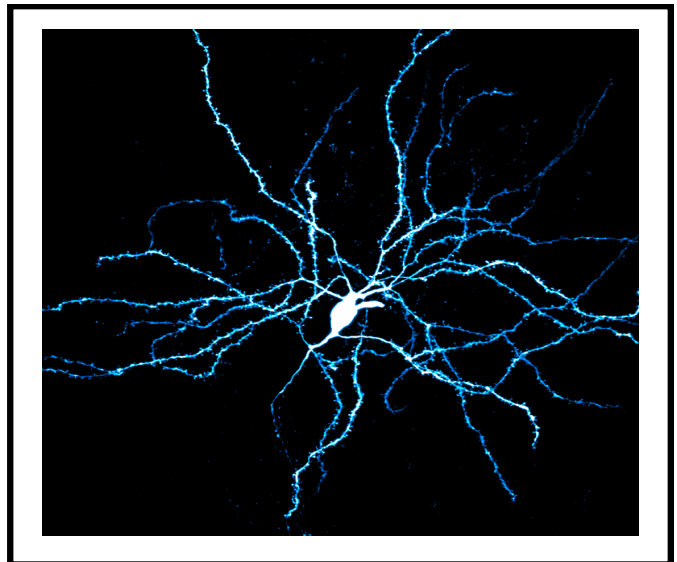
Brief description of image: 250 words max, Image specification: 300 dpi

Images contributed from scientists across the globe will be collated on the Parkinson's Scientific Art webpage creating a global platform to increase visibility to the collection to scientific and beyond community

Please email images to asheeta.prasad@unsw.edu.au with the information above.



Dr Rebecca Keogh
Pearson Lab



Dr Billy Chieng and Dr Serena Becchi
Balleine Lab